

# ITALIAN ROOFING SHINGLES WITH PATENTED G-EVO GRANULES - Best For Algae and UV Resistance....



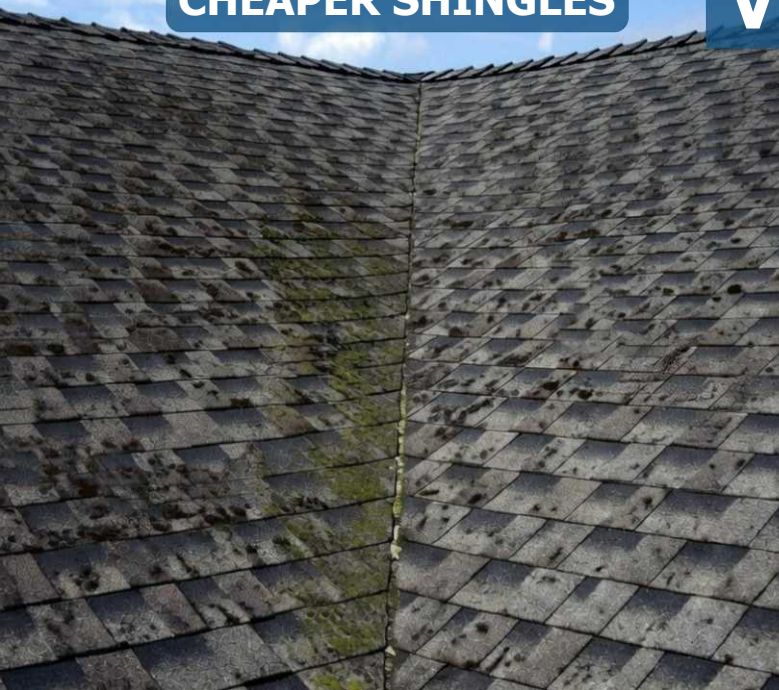
The expansion of [TEGOLA](#) began with the establishment of its first manufacturing facility in the heart of Veneto, a region that remains a European benchmark for advanced technology, innovation, and production excellence. This historic facility continues to serve as a key reference point, reflecting TEGOLA's commitment to quality, precision, and continuous technological development.

Over the years, TEGOLA has built a strong network of commercial subsidiaries across Europe and international markets, reinforcing its global presence. In 2004, the company further strengthened its manufacturing capabilities with the opening of a second state of the art production facility near Moscow, recognized for its modern infrastructure, high efficiency, and ability to meet diverse market demands.

CHEAPER SHINGLES

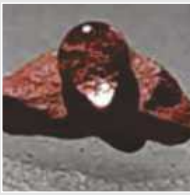
V/S

PREMIUM SHINGLES



STATISTIC WILL SHOW THAT THE INITIAL COST SAVINGS FROM CHEAPER SHINGLES WILL LEAD TO EXPENSIVE REPAIRS AND PREMATURE REPLACEMENT IN THE FUTURE.

### IMPORTANT USP OF OUR PREMIUM ROOFING SHINGLES



G-EVO technology (patented) for superhydrophobic coating to protect shingles from algae, color fading and degrading UV rays.



Nail Seal - Guard to protect nails from water ingress through exposed nail.



To make our shingles strong against wind upliftment and water leakage, we have overlapping joint of 5cm at the center of shingles against the standard overlap of 2.5cm.



Also, the density of bitumen per m<sup>3</sup> is comparatively high to give good anti ageing stability to our shingles against high temperature fluctuation.

Our bitumen has a high density compared to the bitumen of other brands; that is, the mean molecular gap is very small. This means that water will not penetrate or percolate easily with this thickness of our shingles.



Unlike other commonly available brands of shingles, we have full-body algae-resistant (AR) granules; that is, we provide the same quality of AR granules to both the overlapped and exposed areas to fully protect our shingles from algae and extreme ultraviolet (UV) rays.



Due to the maximum exposure of the granule surface embedded on the bitumen, our granule fall is the lowest among all brands.



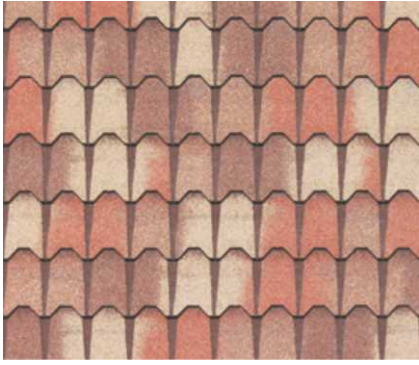
High thermal resistant glue to protect shingles against high wind upliftment and delimitation of double layer shingles.



# MASTER LINE



## MASTER COPPO



## MASTER



**504** TERRACOTTA



**511** LEATHER



**122** BARK



**129** WOOD SHAKE



**427** ANTINQUE WOOD



**548** NATURAL SLATE



**553** LIGHT SLATE



**151** DARK SLATE



**167** ANCIENT STONE



## MASTER J



**505** TERRACOTTA



**519** RED MAPLED



**400** ANTIQUE RED



**532** COFFEE



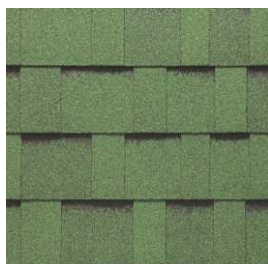
**534** OAKWOOD



**151** DARK GREY



**160** DARK SLATE



**070** 2-TONE GREEN



**511** LEATHER



**562** CHARCOAL

# PROJECT REFERENCES

## MASTER COPPO



## MASTER



## MASTER J



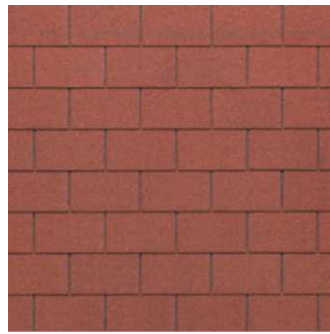
# TOP SHINGLE LINE



## 4 TAB RECTANGULAR - SHINGLE / RIDGE



**507** SHADED RED



**508** PURPLE RED



**434** SHADED BROWN



**061** SLATE GREY



**060** BLACK



**473** SHADED GREEN



## 3 TAB RECTANGULAR - RIDGE / SHINGLE



**400** ANTIQUE RED



**511** LEATHER



**160** DARK SLATE



**070** 2-TONE GREEN



**505** TERRACOTTA



**020** COFFEE BROWN

# PROJECT REFERENCES

## 4 TAB RECTANGULAR - SHINGLE / RIDGE



## 3 TAB RECTANGULAR - RIDGE / SHINGLE



# METAL LINE



## ULTIMETAL HD



CORTEN



SLATE



VERDIGRIS



NATURAL

IMPORTANT PROPERTIES	CHARACTERISTICS
Limited Life Warranty - Yrs	40
Type of Bitumen	Oxidised
Dimesnson - mm	1000 x 340 ±3
Exposed area - mm	1000 x 290
Body Thickness - mm	4.7 ±10%
Weight / Sqm - Kg	8.5 ±10%
Coverage per bundle, Sqm	4.06



## PRESTIGE COMPACT PLUS



IMPORTANT PROPERTIES	CHARACTERISTICS
Limited Life Warranty - Yrs	40
Type of Bitumen	Oxidised
Dimesnson - mm	1000 x 340 ±3
Exposed area - mm	1000 x 290
Body Thickness - mm	4.7 ±10%
Weight / Sqm - Kg	8.28 ±10%
Coverage per bundle, Sqm	4.06



## PRESTIGE TRADITIONAL



IMPORTANT PROPERTIES	CHARACTERISTICS
Limited Life Warranty - Yrs	40
Type of Bitumen	Oxidised
Dimesnson - mm	1000 x 340 ±3
Exposed area - mm	1000 x 145
Body Thickness - mm	3.1 ±10%
Weight / Sqm - Kg	10.70 ±10%
Coverage per bundle, Sqm	2.61

## PROJECT REFERENCES

### ULTIMATEL HD



### PRESTIGE COMPACT PLUS



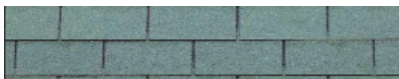
### PRESTIGE TRADITIONAL



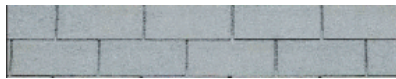
# Acti Roof - Highly Eco-Friendly Shingles

## Your choice against smog

Photocatalytic shingles for a true "active" which reduces air pollution. The photocatalytic shingle that uses sun and water to transform smog into non-toxic salts for us and the environment.



**AR Green**



**AR Grey**



**AR Blue**

## ACTI ROOF RECTANGULAR

### Description:

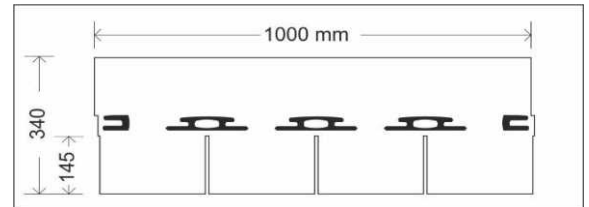
Single-layer flexible bituminous shingle, with glassfiber carrier and protected by colored ceramic-coated basalt.

### Application:

Application on pitched roof, with a slope between 5° and 85°. Installation temperature above +5°C. Always check adhesion of the tabs or of the shingle at the end of the installation.



EN 544:2011  
08 N.B. 0497  
DoP N. 010



### GENERAL INFORMATION

Properties	Norm	Unit of Measure	Value	Tolerance
Bitumen Type / Compound Type	-		Oxidized Bitumen	
Width	EN 544	mm	1000	±3
Height	EN 544	mm	340	±3
Exposed Area	-	mm	145	-
Adhesion System	-		Self-Adhesive Points	

### PACKAGING

	Unit of Measure	Value	Tolerance
Type		Polyethylene Film	
Shingles per Bundle		21	
m <sup>2</sup> per Bundle		3.05	
m <sup>2</sup> per Pallet		158.60	

DRS1P600-C Rev. 01 - 02/05/2024

# SYSTEMS

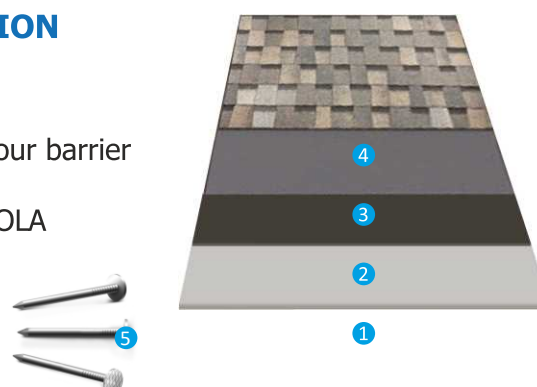
## SYSTEM FOR TORCHING METHOD OF APPLICATION

1. Base layer of concrete/ cement fibre board, etc.
2. Bitumen primer coating [TEGOLA Primer (S)-25]
3. Underlay bitumen membrane [TEGOLA Super Seal (P)-25]
4. Final finish of Asphalt-based roofing shingles by TEGOLA Canadese, Italy



## SYSTEM FOR NAILING METHOD OF APPLICATION

1. Base layer of wooden deck or cement fibre board.
2. Bitumen primer coating [TEGOLA Primer (S)-25].
3. Underlay of self-adhesive bitumen membrane or vapour barrier of any waterproof sheet (need base or optional)
4. Final finish of Asphalt-based roofing shingles by TEGOLA Canadese, Italy.
5. Nails / Screws.



## SPECIFICATIONS OF OUR ROOFING SHINGLES

IMPORTANT PROPERTIES	MASTER LINE - DOUBLE LAYER			TOP SHINGLE LINE - SINGLE LAYER	
	MASTER J	MASTER	MASTER COPPO	3 TAB - RIDGE / SHINGLE	4 TAB - SHINGLE / RIDGE
Limited Life Warranty - Yrs.	30	40	40	30	30
Re-inforcement material / gsm	Fibreglass / 110 gsm				
Type of Bitumen	Oxidised	Oxidised	Oxidised	Oxidised	Oxidised
Bitumen qty. per layer - Kg / Sqm	>1.5 kg	>1.5 kg	>1.5 kg	>1.5 kg	>1.5 kg
Flow Resistance - °C	90°	90°	90°	90°	90°
Body Thickness - mm	6.3	6.6	6.6	3	3
Weight / Sqm - Kg	11.7	12.3	13	9.4	9.4
Coverage Per Bundle, Sqm	2	2	2	3.05	3.5
Qty. / Pallet - Sqm	136	136	104	182	182
Recommended Method of Installation	Both Torching and Nailing Method				
Dimension - mm	998 x 337	998 x 337	1000 x 340	1000 x 340	1000 x 340
Exposed Area - mm	998 x 143	998 x 143	1000 x 245	1000 x 145	1000 x 145
Shingles per bundle - piece	14	14	9	21	24
Algae and UV Rays Resistance	Best as per customers feedback				

# BITUMEN PRIMER & BITUMEN MEMBRANES



## TEGOLA PRIMER (S)-25

TEGOLA PRIMER (S)-25 is a solvent based bitumen primer designed to enhance adhesion of waterproofing membranes to concrete, metal, and masonry surfaces. It penetrates deeply into the substrate, binds surface dust, and creates a strong bonding layer, ensuring effective and long lasting performance of bituminous waterproofing systems.

PROPERTIES*	TYPICAL VALUE	TEST METHOD
Density @ 25° C, Kg / Liter	0.90 - 0.95	ASTM D 70
Packing	10 liter & 20 liter Drum.	
Viscosity @ 25° C, cps.	100-150	ASTM D 70
Drying time to touch hr.	60 min.	Visual
Solid Content, % wt	48 % (min)	ASTDM D 402



## TEGOLA SUPER SEAL (P)-25

TEGOLA SUPER SEAL (P)-25 is UV resistant APP modified membrane with polyester reinforcement highly recommended for both underlayment and waterproofing. It offers excellent strength, dimensional stability, and durability, making it ideal for use as a base or intermediate layer in multi layer waterproofing systems for roofs and structures.

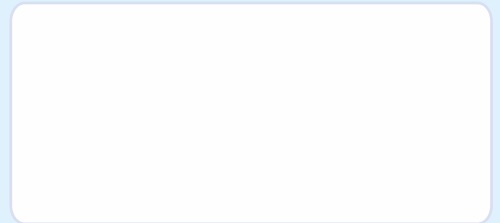
PROPERTIES*	TEGOLA SUPER SEAL (P)-25			TEST STANDARD
Thickness **(mm)	2	3	4	ASTM D 5147
Roll Size	1x15 sqm	1x10 sqm	1x10 sqm	
Weight / Sqm	2.65 ± 0.26 Kg/m <sup>2</sup>	3.85 ± 0.38 Kg/m <sup>2</sup>	5.15 ± 0.51 Kg/m <sup>2</sup>	
Penetration# at 25°C (dmm)	≤ 20	≤ 20	≤ 20	ASTM D 5
Softening Point # (°C)	≥ 150	≥ 150	≥ 150	ASTM D 36
Tensile Strength (N / 5cm)				
Longitudinal	600 ± 200	700 ± 200	750 ± 200	ASTM D 5147
Transversal	400 ± 150	450 ± 200	450 ± 150	
Elongation at Break (%)				
Longitudinal	30 ± 15	30 ± 15	30 ± 15	ASTM D 5147
Transversal	30 ± 15	30 ± 15	30 ± 15	
Water Absorption (%)	≤ 0.20	≤ 0.20	≤ 0.20	ASTM D 5147
Flexibility at Low Temperature (°C) (No Cracks)	0 to -5	0 to -5	0 to -5	ASTM D 5147
Dimensional Stability (%)				
Longitudinal	≤ 0.50	≤ 0.50	≤ 0.50	ASTM D 5147
Transversal	≤ 0.50	≤ 0.50	≤ 0.50	
High Temperature Flow Resistance at 120 °C for 2 Hours	No Flow	No Flow	No Flow	ASTM D 5147
Tear Resistance (N)				
Longitudinal	> 250	> 250	> 250	ASTM D 5147
Transversal	> 200	> 200	> 200	ASTM D 4073
Puncture Resistance (N)	> 400	> 400	> 400	ASTM E 154
Reinforcement of Polyester	150 g/m <sup>2</sup>	150 g/m <sup>2</sup>	150 g/m <sup>2</sup>	



**Note:** To understand properly about our shade and hue of our roofing material, pl refer actual sample of same.



Distributed by:



Indian Subsidiary Company:  
**TEGOLA Tema India Private Limited.**  
Novel Square, Office No. 201, Second Floor, Chokkanahalli,  
Thanisandara Main Road, Bangalore, Karnataka 560064, India.  
Sales: sales@tegola.in | T: +91 98442 58700  
Coml: hemant.pillai@tegolacanaese.com | T: +91 99224 41205  
Website: www.tegola.in

**TEGOLA CANADESE SRL**  
Via dell'Industria,  
21 - 31029 Vittorio Veneto (TV)  
ITALY.  
Tel: +39 0438 9111  
Email: info@tegolacanaese.com  
Website: www.tegolacanaese.com



ITALIAN ROOFING DESIGN

Company certified

